

Centro Empresarial Lusoworld II
Rua Pé de Mouro, nº 26 - Linhó
2710-335 Sintra, Portugal

Phone: (+351) 211 941 737
e-Fax: (+351) 211 946 681

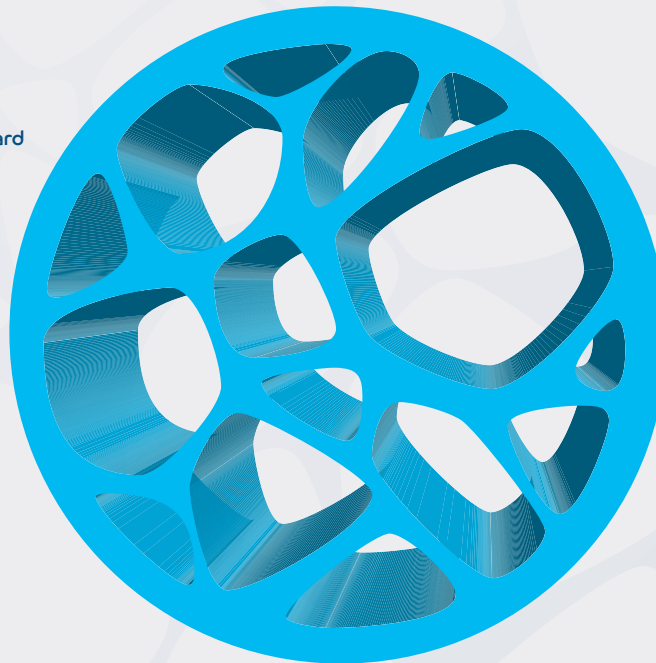
sales@medbone.eu
www.medbone.eu



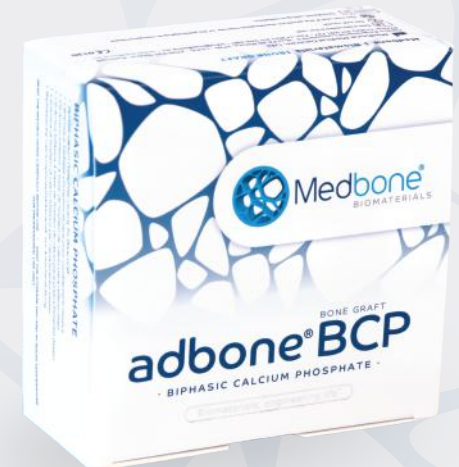
Awards

- Technological Innovation Award – Capgemini (2017)
- Noteworthy Distinction – Department of Materials Science – FCT NOVA (2016)
- Young Entrepreneur Award – ANJE (2012)
- Internationalization Award – Gesventure (2011)
- Businesswoman Grow Award – INOVAGAIA (2011)
- BES National Innovation Contest: Healthcare Technology (2009)
- Entrepreneurship Municipal Merit Medal – Municipality of Cascais (2009)
- Cascais Business Ideas Contest – DNA (2008)
- Best Internship 2006 Award – Metallurgical and Materials Engineering Board of the Order of Engineers (2006)
- FEMS Award – Federation of European Materials Societies (2003)

Distributed by:



BONE GRAFT
adbone® BCP



porous synthetic bone biomaterial
hydroxyapatite and beta-tricalcium phosphate

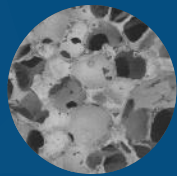


BONE GRAFT adbone®BCP

adbone®BCP is a totally synthetic biphasic bone graft material made of 75% of hydroxyapatite (HAp) and 25% of beta-tricalcium phosphate (β -TCP).

adbone®BCP features a multidirectional interconnected porosity that guides the three-dimensional regeneration of bone. As the bone healing process occurs, **adbone®BCP** is resorbed and replaced by new bone. Due to its composition, **adbone®BCP** presents a biphasic resorption.

adbone®BCP was designed to achieve the highest degree of porosity without compromising the mechanical resistance.



Scanning Electron Microscopy (SEM) analysis



Histology of adbone®BCP, totally surrounded by viable bone

adbone®BCP is intended to be used in the filling of bone voids or defects that are not intrinsic to the stability of the bone structure:

Reconstruction of tumor voids and cyst defects

Crestal augmentation

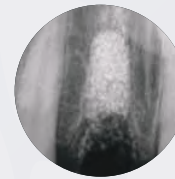
Alveolar regeneration

Regeneration of periodontal defects

Sinus lift

adbone®BCP has been designed to imitate natural bone

Why choose adbone®BCP ?



Radiopaque

adbone®BCP is radiopaque, allowing the monitorization of the graft osteointegration



Vascularization

The interconnected porosity of adbone®BCP forms an ideal environment for vascularization



Totally synthetic

adbone®BCP does not contain animal or human tissues or derivatives



Easy to handle

adbone®BCP can be easily mixed with patient's blood. The hydrophilic behavior of adbone®BCP confers a high cohesivity of the particles



No membrane

The use of membrane is not required unless there is risk of graft exposure



REFERENCES	GEOMETRY	RANGE SIZES	QUANTITY
BCP010505G BCP050105G	Granules	0.1 - 0.5mm 0.5 - 1mm	0.5g x 1 Unit
BCP010505P BCP050105P	Granules	0.1 - 0.5mm 0.5 - 1mm	0.5g x 5 Units
BCP010510G BCP050110G BCP010210G	Granules	0.1 - 0.5mm 0.5 - 1mm 1 - 2mm	1g x 1 Unit
BCP010510P BCP050110P BCP010210P	Granules	0.1 - 0.5mm 0.5 - 1mm 1 - 2mm	1g x 5 Units
BCP080820C	Cylinder	8 x 20mm	1 Unit
BCP051015B BCP080820B BCP151520B	Blocks	5 x 10 x 15mm 8 x 8 x 20mm 15 x 15 x 20mm	1 Unit

For other references and geometries, contact our team